

*Revenue Freight Traffic Statistics
for the Major North American Railroads*



Weekly Railroad Traffic

Week 26, 2014

Ended June 28, 2014

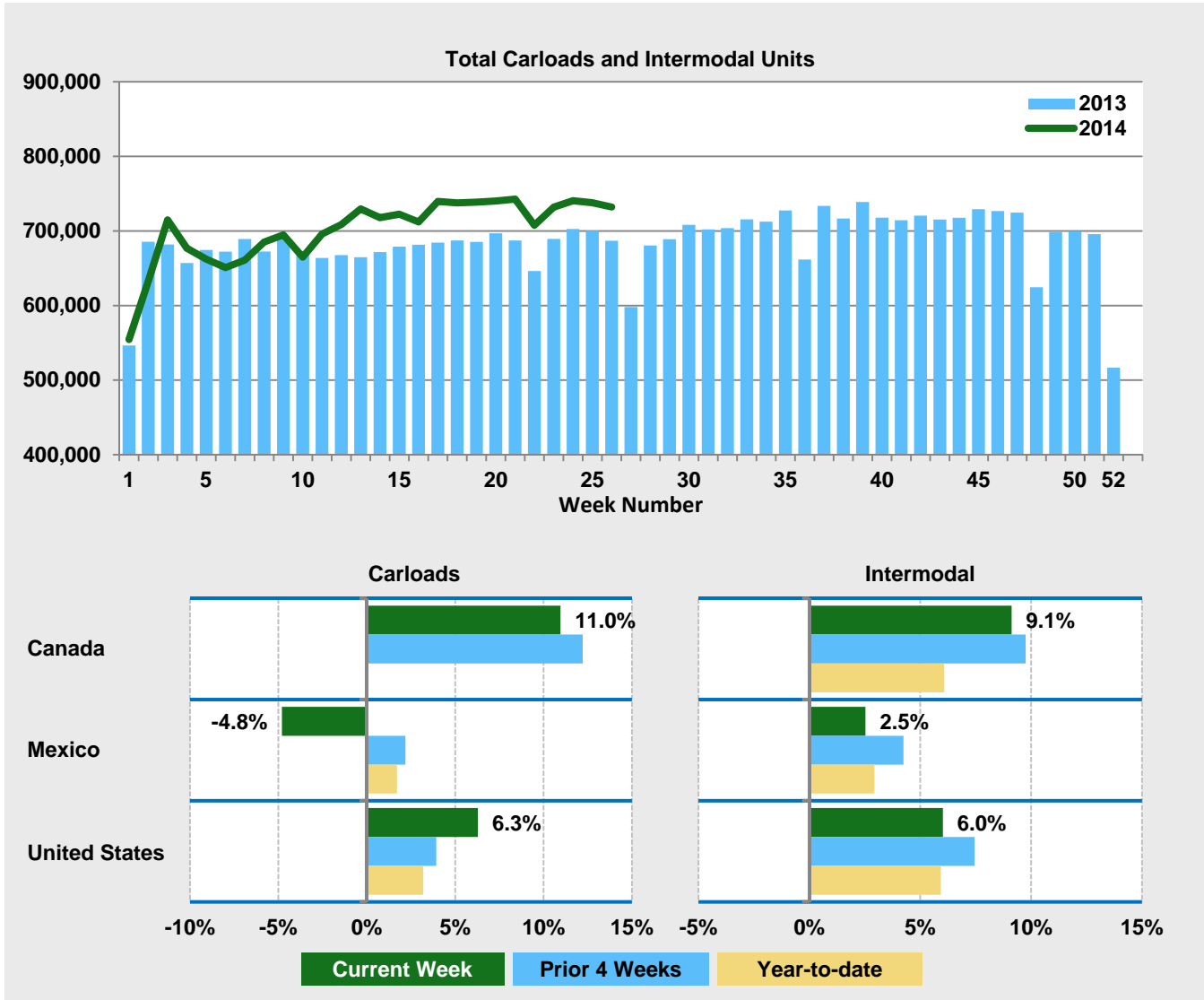
Notes

Week 26, 2014 – Ended June 28, 2014

1. Traffic of Canadian railroads reflects their Canadian and U.S. operations, and the operations of their U.S. subsidiaries. U.S. traffic reflects the U.S. and Canadian operations of U.S. railroads.
2. U.S. Class I railroads are those earning revenues of at least \$452.7 million in 2012, as defined by the Surface Transportation Board.
3. The U.S. railroads in the *Weekly Railroad Traffic* report originated 87 percent of U.S. non-intermodal carloads and 98 percent of U.S. intermodal units during 2011. If the U.S. operations of the Canadian railroads were included, 96 percent of U.S. carload traffic, and 100 percent of intermodal traffic, would be represented. The Canadian railroads in the *Weekly Railroad Traffic* report accounted for 96 percent of Canadian traffic in 2009.
4. Revisions to the traffic data may be submitted by reporting railroads through the end of the following calendar year. When a railroad is unable to submit its traffic figures for the current week, the AAR repeats figures from a prior period. These figures are replaced with carrier-reported data as soon as possible, and future reports reflect these revisions.
5. Year-over-year comparisons are made to the week (or comparable period) which ended 52 weeks earlier.
6. Cover map based upon the *National Transportation Atlas Database 2011* and the *North American Transportation Atlas Database 1998*, published by the U.S. Department of Transportation, Bureau of Transportation Statistics, with updates from railroad system maps.

North American Rail Traffic Summary

Week 26, 2014 – Ended June 28, 2014



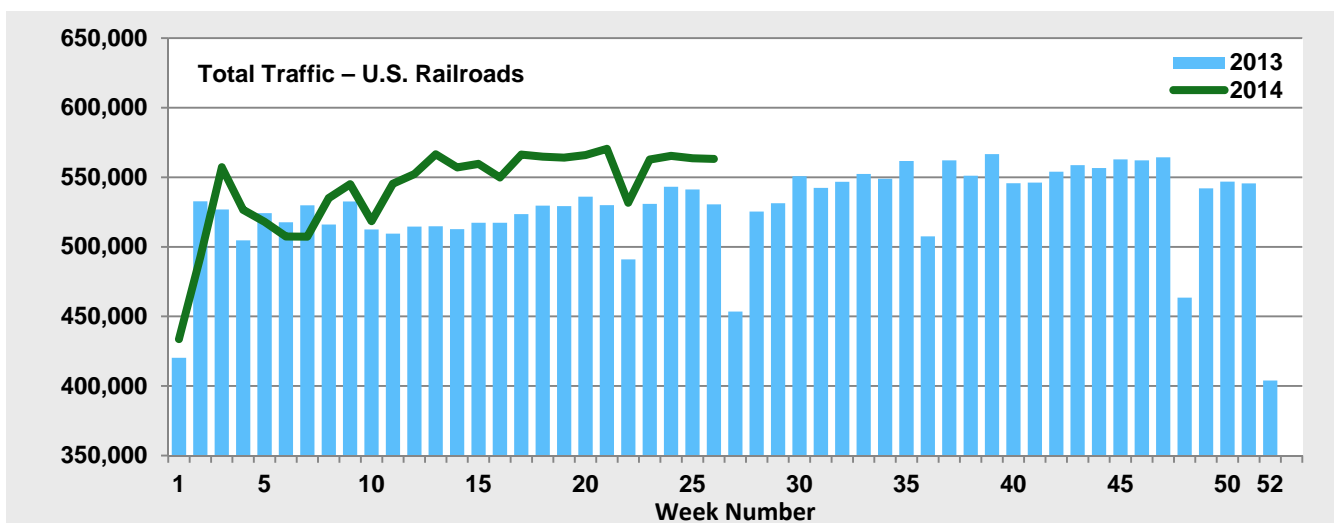
	This Week		Prior 4 Weeks		Year-To-Date		
	Cars	vs 2013	Avg/wk	vs 2013	Cumulative	Avg/wk	vs 2013
Total Carloads	398,186	6.7%	395,317	5.6%	9,885,137	380,198	2.4%
Chemicals	43,246	2.0%	43,328	3.9%	1,125,442	43,286	0.8%
Coal	120,859	4.4%	120,621	0.3%	3,124,129	120,159	1.2%
Farm and Food Products, excl. Grain	24,750	9.1%	25,637	12.6%	653,516	25,135	4.3%
Forest Products	20,053	2.1%	19,522	6.0%	480,790	18,492	-1.0%
Grain	29,799	18.1%	30,669	23.9%	804,114	30,927	15.7%
Metallic Ores and Metals	48,303	4.6%	48,920	5.5%	1,108,703	42,642	-4.5%
Motor Vehicles and Parts	28,211	8.0%	27,596	5.5%	668,811	25,724	0.9%
Nonmetallic Minerals and Products	48,350	10.8%	46,985	7.8%	1,090,571	41,945	6.0%
Petroleum and Petroleum Products	23,727	14.6%	22,279	7.1%	580,200	22,315	7.0%
Other	10,888	1.5%	9,761	1.0%	248,861	9,572	1.3%
Intermodal Units	333,957	6.4%	334,158	7.7%	8,347,165	321,045	5.9%
Total Traffic	732,143	6.6%	729,475	6.6%	18,232,302	701,242	4.0%

Notes: Averages per week may not sum to totals as a result of independent rounding.

Rail Traffic Originated, by Commodity – U.S. Railroads

Week 26, 2014 – Ended June 28, 2014

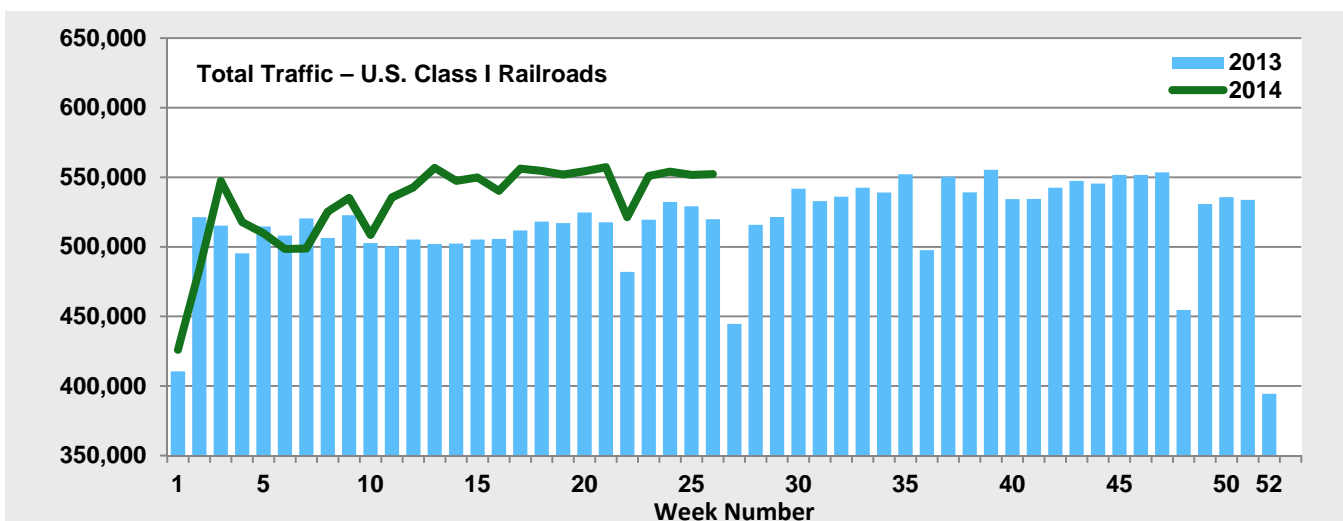
Commodity	This Week		Prior 4 Weeks		Year-To-Date		
	Cars	vs 2013	Avg/wk	vs 2013	Cumulative	Avg/wk	vs 2013
Agricultural & Food Products	34,382	7.5%	35,153	10.9%	959,944	36,921	11.0%
Grain	18,003	12.9%	18,757	20.3%	524,660	20,179	19.8%
Farm products, excl. grain	934	20.4%	881	7.7%	22,123	851	-3.1%
Grain mill products	9,468	8.2%	9,488	5.5%	250,991	9,654	6.7%
Food products	5,977	-8.1%	6,028	-4.1%	162,170	6,237	-3.9%
Chemicals & Petroleum	45,965	6.2%	44,426	3.1%	1,169,438	44,978	3.2%
Chemicals	30,071	0.7%	29,905	2.1%	788,477	30,326	1.4%
Petroleum & petroleum products	15,894	18.5%	14,521	5.2%	380,961	14,652	7.0%
Coal	111,711	4.3%	110,315	-1.2%	2,881,380	110,822	1.1%
Forest Products	12,133	2.8%	11,631	9.1%	290,378	11,168	2.3%
Primary forest products	1,643	-5.8%	1,659	21.4%	40,059	1,541	3.9%
Lumber & wood products	3,841	10.0%	3,640	16.3%	92,324	3,551	5.8%
Pulp & paper products	6,649	1.3%	6,332	2.7%	157,995	6,077	0.0%
Metallic Ores & Metals	28,405	7.6%	27,422	7.5%	630,168	24,237	-1.2%
Metallic ores	8,019	11.5%	8,178	7.4%	146,593	5,638	-8.5%
Coke	3,888	9.7%	3,774	-4.6%	96,194	3,700	-1.3%
Primary metal products	11,581	0.0%	11,121	10.0%	275,874	10,611	2.2%
Iron & steel scrap	4,917	20.5%	4,350	13.3%	111,507	4,289	1.5%
Motor Vehicles & Parts	18,297	8.1%	17,586	7.0%	434,765	16,722	1.2%
Nonmetallic Minerals & Products	38,684	10.7%	37,853	8.8%	879,641	33,832	6.4%
Crushed stone, sand & gravel	24,649	15.1%	24,122	13.5%	549,092	21,119	7.1%
Nonmetallic minerals	5,567	4.2%	5,262	-5.9%	129,083	4,965	2.8%
Stone, clay & glass products	8,468	3.5%	8,469	6.7%	201,466	7,749	6.9%
Other	8,880	6.3%	7,823	7.0%	202,580	7,792	4.7%
Waste & nonferrous scrap	3,752	-1.1%	3,403	2.1%	81,792	3,146	0.4%
All other carloads	5,128	12.5%	4,420	11.1%	120,788	4,646	7.8%
Total Carloads	298,457	6.3%	292,208	3.9%	7,448,294	286,473	3.2%
Intermodal Traffic (Units)	264,766	6.0%	263,678	7.5%	6,642,440	255,478	5.9%
Containers	234,901	6.3%	234,529	7.8%	5,869,245	225,740	5.7%
Trailers	29,865	3.6%	29,149	5.1%	773,195	29,738	7.6%
Total Traffic	563,223	6.2%	555,886	5.6%	14,090,734	541,951	4.5%



Rail Traffic Originated, by Commodity – U.S. Class I Railroads

Week 26, 2014 – Ended June 28, 2014

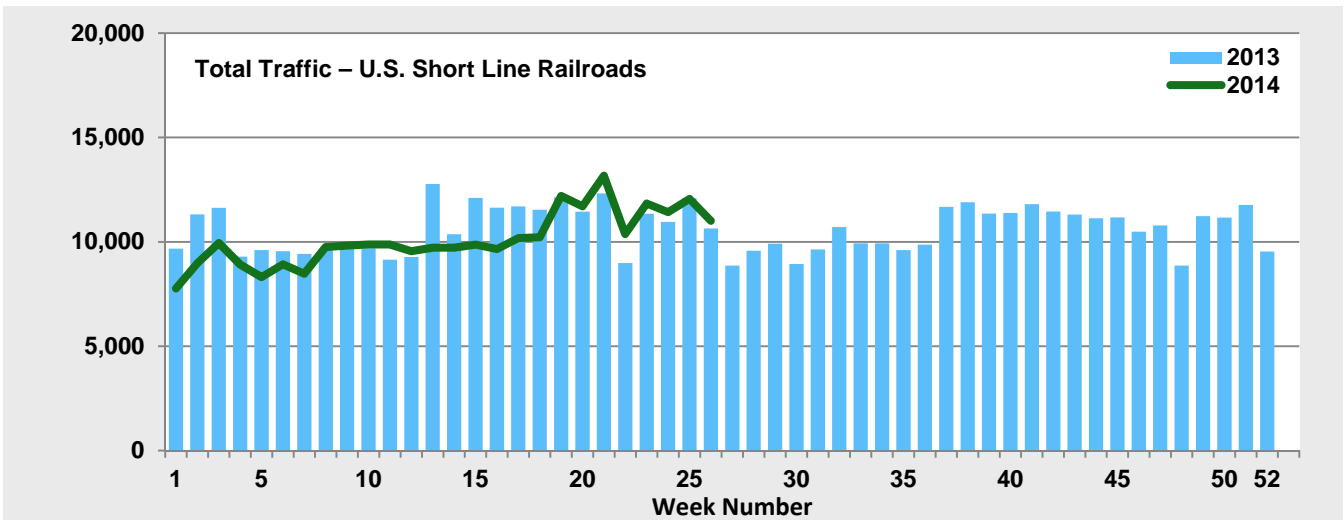
Commodity	This Week		Prior 4 Weeks		Year-To-Date		
	Cars	vs 2013	Avg/wk	vs 2013	Cumulative	Avg/wk	vs 2013
Agricultural & Food Products	34,277	7.6%	35,065	10.9%	957,354	36,821	11.1%
Grain	18,003	12.9%	18,757	20.3%	524,660	20,179	19.8%
Farm products, excl. grain	934	20.4%	881	7.7%	22,123	851	-3.1%
Grain mill products	9,468	8.2%	9,488	5.5%	250,991	9,654	6.7%
Food products	5,872	-8.3%	5,940	-4.2%	159,580	6,138	-4.0%
Chemicals & Petroleum	45,626	6.2%	44,095	3.0%	1,162,020	44,693	3.3%
Chemicals	29,732	0.6%	29,574	2.0%	781,059	30,041	1.5%
Petroleum & petroleum products	15,894	18.5%	14,521	5.2%	380,961	14,652	7.0%
Coal	110,342	4.4%	108,716	-0.9%	2,835,508	109,058	1.4%
Forest Products	12,125	2.8%	11,622	9.1%	290,150	11,160	2.4%
Primary forest products	1,638	-5.4%	1,656	22.2%	39,941	1,536	4.7%
Lumber & wood products	3,841	10.0%	3,640	16.3%	92,305	3,550	5.7%
Pulp & paper products	6,646	1.2%	6,327	2.6%	157,904	6,073	0.0%
Metallic Ores & Metals	25,138	7.4%	24,111	7.4%	590,044	22,694	1.2%
Metallic ores	5,077	6.2%	5,283	4.5%	115,401	4,439	-2.1%
Coke	3,888	12.0%	3,771	-3.8%	96,175	3,699	0.2%
Primary metal products	11,296	1.9%	10,750	11.0%	268,151	10,314	3.0%
Iron & steel scrap	4,877	20.2%	4,308	13.6%	110,317	4,243	1.3%
Motor Vehicles & Parts	18,208	7.8%	17,457	6.9%	431,422	16,593	1.1%
Nonmetallic Minerals & Products	37,591	10.7%	36,633	8.1%	845,968	32,537	7.1%
Crushed stone, sand & gravel	23,689	15.1%	23,014	12.5%	517,953	19,921	8.4%
Nonmetallic minerals	5,567	4.2%	5,262	-5.9%	129,083	4,965	2.8%
Stone, clay & glass products	8,335	3.6%	8,357	6.7%	198,932	7,651	6.6%
Other	8,818	5.8%	7,743	6.3%	200,836	7,724	4.7%
Waste & nonferrous scrap	3,733	-1.3%	3,387	2.0%	81,420	3,132	0.3%
All other carloads	5,085	11.7%	4,356	9.9%	119,416	4,593	7.9%
Total Carloads	292,125	6.2%	285,441	3.9%	7,313,302	281,281	3.6%
Intermodal Traffic (Units)	260,093	6.2%	259,022	7.5%	6,514,140	250,544	5.9%
Containers	232,157	6.6%	231,694	7.8%	5,792,259	222,779	5.7%
Trailers	27,936	3.1%	27,328	4.8%	721,881	27,765	7.6%
Total Traffic	552,218	6.2%	544,462	5.6%	13,827,442	531,825	4.7%



Rail Traffic Originated, by Commodity – U.S. Short Line Railroads

Week 26, 2014 – Ended June 28, 2014

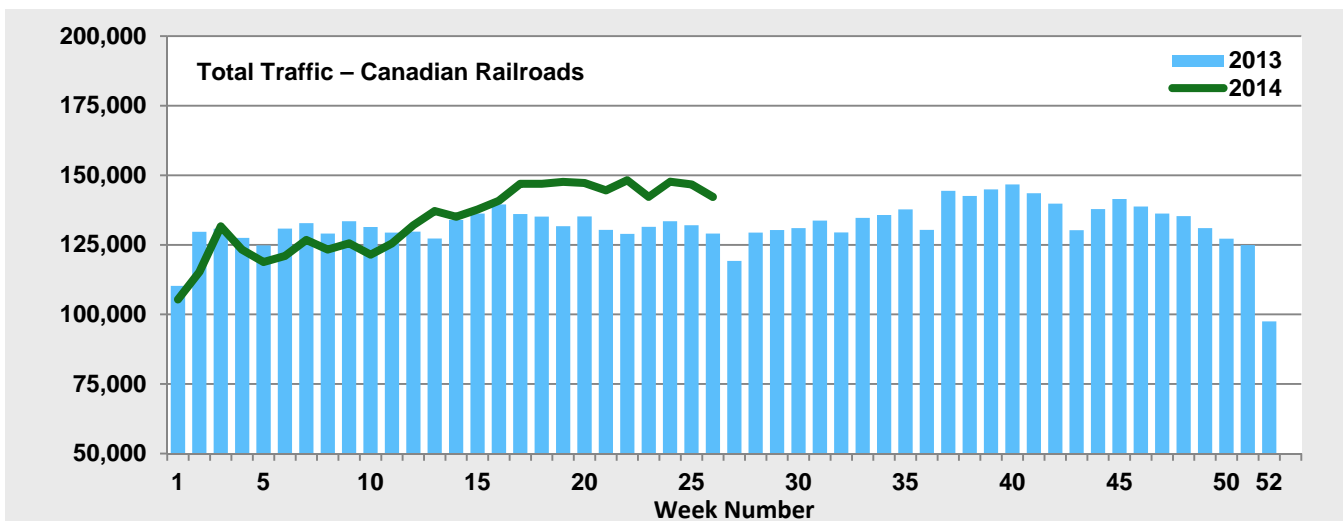
Commodity	This Week		Prior 4 Weeks		Year-To-Date		
	Cars	vs 2013	Avg/wk	vs 2013	Cumulative	Avg/wk	vs 2013
Agricultural & Food Products	105	2.9%	88	1.7%	2,590	100	-1.1%
Grain	0	–	0	–	0	0	–
Farm products, excl. grain	0	–	0	–	0	0	–
Grain mill products	0	-100.0%	0	–	0	0	-100.0%
Food products	105	4.0%	88	1.7%	2,590	100	-0.8%
Chemicals & Petroleum	339	10.1%	331	8.8%	7,418	285	-11.1%
Chemicals	339	10.1%	331	8.8%	7,418	285	-11.1%
Petroleum & petroleum products	0	–	0	–	0	0	-100.0%
Coal	1,369	-2.7%	1,599	-16.3%	45,872	1,764	-13.4%
Forest Products	8	-42.9%	9	-39.3%	228	9	-47.5%
Primary forest products	5	-64.3%	4	-67.4%	118	5	-68.8%
Lumber & wood products	0	–	0	–	19	1	850.0%
Pulp & paper products	3	–	5	80.0%	91	4	68.5%
Metallic Ores & Metals	3,267	8.9%	3,312	7.8%	40,124	1,543	-26.7%
Metallic ores	2,942	22.0%	2,895	13.1%	31,192	1,200	-26.5%
Coke	0	-100.0%	4	-90.5%	19	1	-98.8%
Primary metal products	285	-42.5%	371	-13.1%	7,723	297	-21.1%
Iron & steel scrap	40	90.5%	42	-8.2%	1,190	46	19.2%
Motor Vehicles & Parts	89	122.5%	129	15.0%	3,343	129	10.1%
Nonmetallic Minerals & Products	1,093	13.1%	1,220	35.9%	33,673	1,295	-8.6%
Crushed stone, sand & gravel	960	16.1%	1,109	39.7%	31,139	1,198	-10.9%
Nonmetallic minerals	0	–	0	–	0	0	–
Stone, clay & glass products	133	-4.3%	112	7.5%	2,534	97	33.0%
Other	62	195.2%	80	189.2%	1,744	67	8.2%
Waste & nonferrous scrap	19	46.2%	16	47.6%	372	14	32.4%
All other carloads	43	437.5%	65	275.4%	1,372	53	3.1%
Total Carloads	6,332	8.1%	6,767	5.3%	134,992	5,192	-16.0%
Intermodal Traffic (Units)	4,673	-2.3%	4,656	5.4%	128,300	4,935	9.2%
Containers	2,744	-9.8%	2,836	3.1%	76,986	2,961	10.2%
Trailers	1,929	10.7%	1,821	9.3%	51,314	1,974	7.7%
Total Traffic	11,005	3.4%	11,423	5.3%	263,292	10,127	-5.3%



Rail Traffic Originated, by Commodity – Canadian Railroads

Week 26, 2014 – Ended June 28, 2014

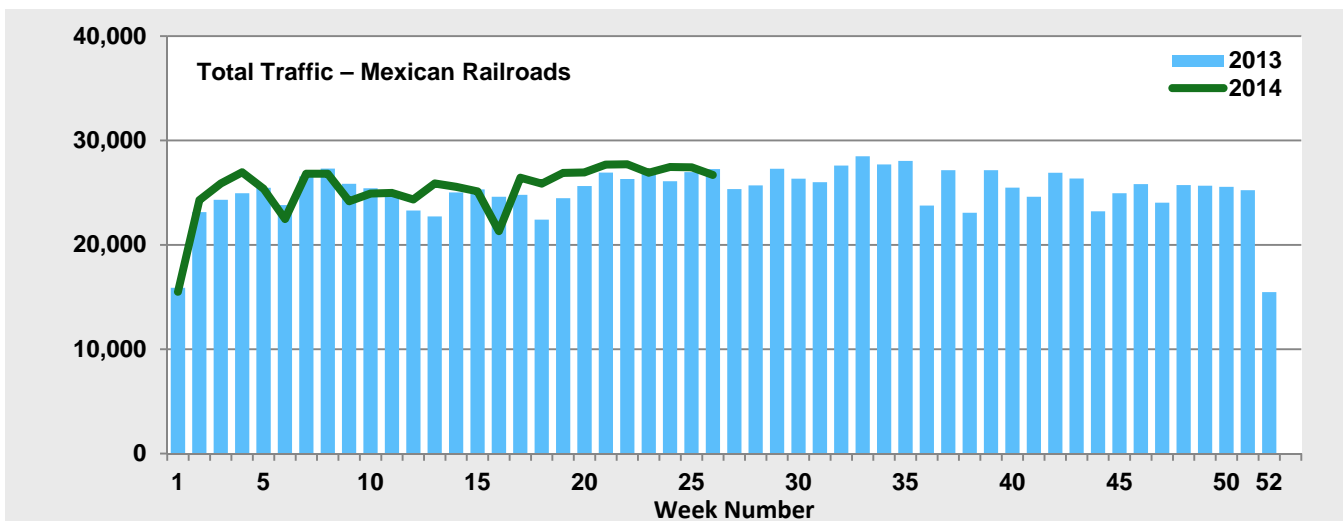
Commodity	This Week		Prior 4 Weeks		Year-To-Date		
	Cars	vs 2013	Avg/wk	vs 2013	Cumulative	Avg/wk	vs 2013
Agricultural & Food Products	16,750	36.2%	17,803	46.0%	431,563	16,599	13.7%
Grain	10,324	38.2%	10,285	45.8%	250,500	9,635	15.0%
Farm products, excl. grain	3,123	107.1%	4,065	138.2%	85,792	3,300	26.2%
Grain mill products	1,183	-17.8%	1,492	-3.4%	40,833	1,571	2.0%
Food products	2,120	12.8%	1,962	3.8%	54,438	2,094	1.4%
Chemicals & Petroleum	19,142	7.4%	19,220	10.0%	489,126	18,813	2.4%
Chemicals	11,813	7.7%	11,892	8.8%	300,703	11,566	-0.7%
Petroleum & petroleum products	7,329	6.9%	7,328	12.0%	188,423	7,247	7.7%
Coal	9,017	5.6%	10,165	19.4%	238,867	9,187	2.4%
Forest Products	7,866	1.0%	7,827	1.7%	189,224	7,278	-5.8%
Primary forest products	1,521	-8.5%	1,567	4.8%	38,529	1,482	-3.6%
Lumber & wood products	3,269	12.9%	3,143	5.7%	72,638	2,794	-4.8%
Pulp & paper products	3,076	-4.8%	3,117	-3.4%	78,057	3,002	-7.6%
Metallic Ores & Metals	16,329	4.9%	17,317	1.0%	367,638	14,140	-12.3%
Metallic ores	12,478	8.8%	13,349	1.7%	273,393	10,515	-15.1%
Coke	606	-29.2%	618	-28.8%	12,939	498	-17.5%
Primary metal products	2,370	-4.4%	2,407	5.4%	59,170	2,276	0.6%
Iron & steel scrap	875	13.8%	943	9.5%	22,136	851	-2.5%
Motor Vehicles & Parts	5,346	8.4%	5,891	2.8%	130,114	5,004	-8.2%
Nonmetallic Minerals & Products	7,585	18.4%	7,010	7.1%	156,340	6,013	7.9%
Crushed stone, sand & gravel	4,914	46.7%	4,540	23.0%	88,335	3,398	25.7%
Nonmetallic minerals	1,356	-17.4%	1,106	-23.3%	32,409	1,247	-17.7%
Stone, clay & glass products	1,315	-7.1%	1,365	-3.3%	35,596	1,369	1.2%
Other	1,407	-23.4%	1,345	-27.3%	31,504	1,212	-19.3%
Waste & nonferrous scrap	491	-14.3%	423	-31.4%	9,592	369	5.0%
All other carloads	916	-27.6%	922	-25.3%	21,912	843	-26.8%
Total Carloads	83,442	11.0%	86,578	12.2%	2,034,376	78,245	-0.1%
Intermodal Traffic (Units)	58,786	9.1%	59,632	9.8%	1,446,750	55,644	6.1%
Containers	57,213	9.9%	57,758	9.8%	1,399,737	53,836	5.8%
Trailers	1,573	-12.8%	1,874	7.2%	47,013	1,808	13.9%
Total Traffic	142,228	10.2%	146,210	11.2%	3,481,126	133,889	2.4%



Rail Traffic Originated, by Commodity – Mexican Railroads

Week 26, 2014 – Ended June 28, 2014

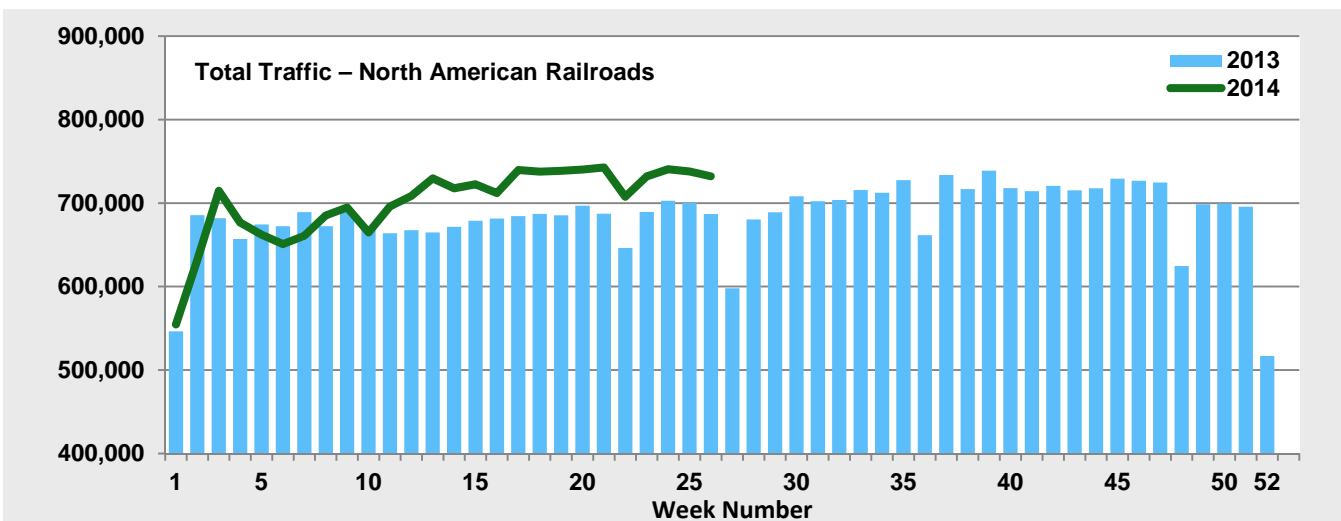
Commodity	This Week		Prior 4 Weeks		Year-To-Date		
	Cars	vs 2013	Avg/wk	vs 2013	Cumulative	Avg/wk	vs 2013
Agricultural & Food Products	3,417	-6.3%	3,349	-8.0%	66,123	2,543	-14.7%
Grain	1,472	-19.1%	1,627	-23.0%	28,954	1,114	-26.9%
Farm products, excl. grain	518	-2.8%	423	46.4%	6,299	242	-0.6%
Grain mill products	120	-42.6%	105	-43.2%	2,649	102	-33.5%
Food products	1,307	20.5%	1,195	13.5%	28,221	1,085	2.4%
Chemicals & Petroleum	1,866	-6.4%	1,961	2.0%	47,078	1,811	-1.8%
Chemicals	1,362	-13.1%	1,532	3.6%	36,262	1,395	-1.0%
Petroleum & petroleum products	504	18.0%	430	-3.4%	10,816	416	-4.2%
Coal	131	1.6%	141	20.0%	3,882	149	5.9%
Forest Products	54	14.9%	65	13.0%	1,188	46	-1.1%
Primary forest products	4	-20.0%	1	300.0%	22	1	46.7%
Lumber & wood products	12	-25.0%	14	8.0%	306	12	25.4%
Pulp & paper products	38	46.2%	51	12.8%	860	33	-8.7%
Metallic Ores & Metals	3,569	-15.1%	4,181	12.9%	110,897	4,265	7.2%
Metallic ores	1,164	-25.8%	1,676	9.7%	44,703	1,719	8.6%
Coke	513	-13.2%	425	-14.8%	12,488	480	-0.7%
Primary metal products	1,598	-13.2%	1,802	24.3%	46,812	1,800	11.4%
Iron & steel scrap	294	44.8%	279	23.2%	6,894	265	-10.1%
Motor Vehicles & Parts	4,568	7.3%	4,119	3.5%	103,932	3,997	13.9%
Nonmetallic Minerals & Products	2,081	-9.2%	2,122	-6.0%	54,590	2,100	-5.5%
Crushed stone, sand & gravel	73	-21.5%	92	268.0%	2,499	96	38.0%
Nonmetallic minerals	56	93.1%	53	89.3%	752	29	0.9%
Stone, clay & glass products	1,952	-10.0%	1,977	-10.3%	51,339	1,975	-7.0%
Other	601	11.9%	593	18.8%	14,777	568	13.6%
Waste & nonferrous scrap	65	-33.0%	58	-7.9%	2,205	85	24.1%
All other carloads	536	21.8%	535	22.6%	12,572	484	12.0%
Total Carloads	16,287	-4.8%	16,531	2.2%	402,467	15,480	1.7%
Intermodal Traffic (Units)	10,405	2.5%	10,849	4.2%	257,975	9,922	2.9%
Containers	10,399	2.5%	10,847	4.3%	257,882	9,919	2.9%
Trailers	6	–	2	-30.0%	93	4	-17.7%
Total Traffic	26,692	-2.1%	27,380	3.0%	660,442	25,402	2.2%



Rail Traffic Originated, by Commodity – North American Railroads

Week 26, 2014 – Ended June 28, 2014

Commodity	This Week		Prior 4 Weeks		Year-To-Date		
	Cars	vs 2013	Avg/wk	vs 2013	Cumulative	Avg/wk	vs 2013
Agricultural & Food Products	54,549	13.8%	56,305	18.5%	1,457,630	56,063	10.3%
Grain	29,799	18.1%	30,669	23.9%	804,114	30,927	15.7%
Farm products, excl. grain	4,575	62.4%	5,369	90.9%	114,214	4,393	17.5%
Grain mill products	10,771	3.6%	11,084	3.3%	294,473	11,326	5.5%
Food products	9,404	-0.7%	9,184	-0.5%	244,829	9,417	-2.1%
Chemicals & Petroleum	66,973	6.1%	65,607	5.0%	1,705,642	65,602	2.8%
Chemicals	43,246	2.0%	43,328	3.9%	1,125,442	43,286	0.8%
Petroleum & petroleum products	23,727	14.6%	22,279	7.1%	580,200	22,315	7.0%
Coal	120,859	4.4%	120,621	0.3%	3,124,129	120,159	1.2%
Forest Products	20,053	2.1%	19,522	6.0%	480,790	18,492	-1.0%
Primary forest products	3,168	-7.2%	3,228	12.8%	78,610	3,023	0.1%
Lumber & wood products	7,122	11.2%	6,796	11.1%	165,268	6,356	0.9%
Pulp & paper products	9,763	-0.6%	9,499	0.6%	236,912	9,112	-2.7%
Metallic Ores & Metals	48,303	4.6%	48,920	5.5%	1,108,703	42,642	-4.5%
Metallic ores	21,661	7.1%	23,203	4.2%	464,689	17,873	-11.2%
Coke	5,007	0.3%	4,817	-9.5%	121,621	4,678	-3.3%
Primary metal products	15,549	-2.2%	15,329	10.8%	381,856	14,687	3.0%
Iron & steel scrap	6,086	20.5%	5,571	13.1%	140,537	5,405	0.2%
Motor Vehicles & Parts	28,211	8.0%	27,596	5.5%	668,811	25,724	0.9%
Nonmetallic Minerals & Products	48,350	10.8%	46,985	7.8%	1,090,571	41,945	6.0%
Crushed stone, sand & gravel	29,636	19.3%	28,754	15.2%	639,926	24,613	9.4%
Nonmetallic minerals	6,979	-0.5%	6,421	-9.0%	162,244	6,240	-2.1%
Stone, clay & glass products	11,735	-0.3%	11,811	2.2%	288,401	11,092	3.4%
Other	10,888	1.5%	9,761	1.0%	248,861	9,572	1.3%
Waste & nonferrous scrap	4,308	-3.5%	3,884	-3.2%	93,589	3,600	1.3%
All other carloads	6,580	5.0%	5,878	4.0%	155,272	5,972	1.4%
Total Carloads	398,186	6.7%	395,317	5.6%	9,885,137	380,198	2.4%
Intermodal Traffic (Units)	333,957	6.4%	334,158	7.7%	8,347,165	321,045	5.9%
Containers	302,513	6.9%	303,134	8.0%	7,526,864	289,495	5.6%
Trailers	31,444	2.6%	31,024	5.2%	820,301	31,550	8.0%
Total Traffic	732,143	6.6%	729,475	6.6%	18,232,302	701,242	4.0%

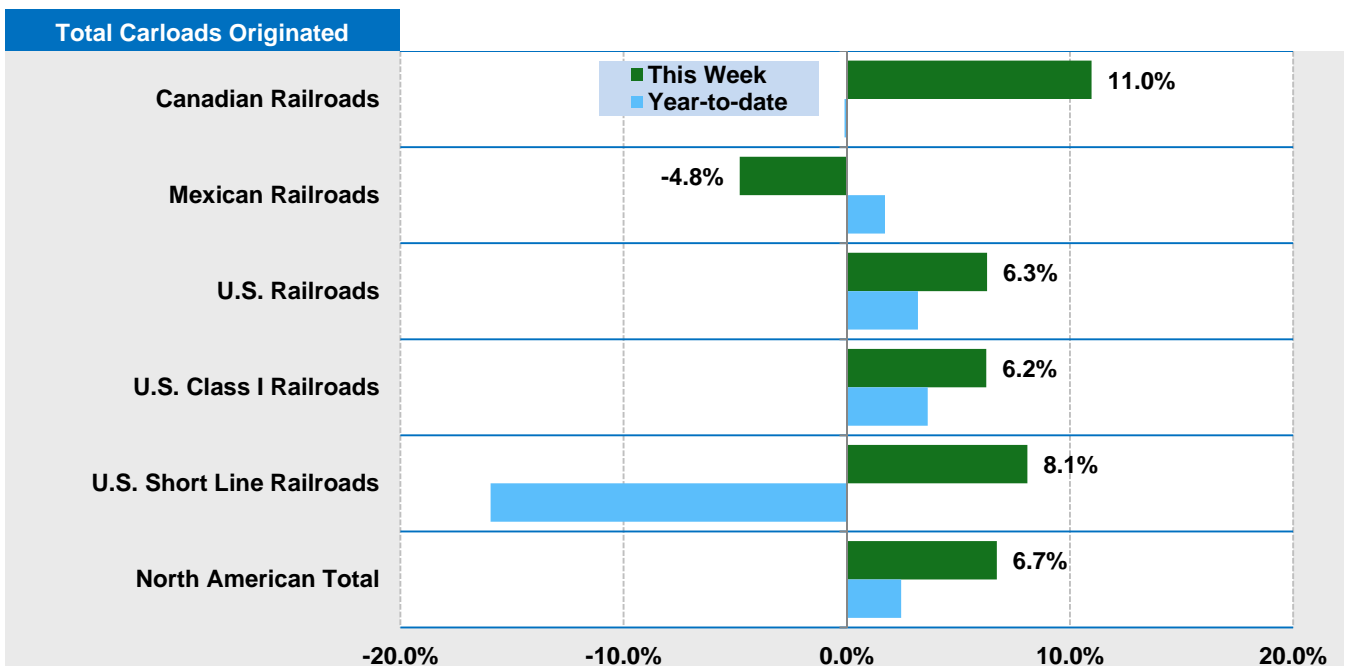


Rail Carloads, by Railroad

Week 26, 2014 – Ended June 28, 2014

Railroad	This Week		Prior 4 Weeks		Year-To-Date		
	Cars	vs 2013	Avg/wk	vs 2013	Cumulative	Avg/wk	vs 2013
Carloads Carried¹							
Canadian Railroads							
CN	70,103	15.3%	71,525	10.1%	1,703,406	65,516	3.4%
Canadian Pacific	34,005	8.1%	34,382	10.8%	847,952	32,614	-1.1%
Mexican Railroads							
Ferrocarril Mexicano	15,193	-6.3%	15,670	2.0%	377,424	14,516	-0.6%
KCS de México	10,399	4.2%	10,399	12.8%	260,733	10,028	8.7%
U.S. Class I Railroads							
East							
CSX Transportation	82,693	14.1%	83,227	5.2%	2,064,071	79,387	4.5%
Norfolk Southern	77,345	9.0%	77,082	6.1%	1,893,982	72,845	0.0%
West							
BNSF Railway	100,012	1.2%	98,209	2.5%	2,598,884	99,957	3.4%
Kansas City Southern	15,844	9.9%	13,926	-2.7%	368,155	14,160	3.9%
Union Pacific	111,364	5.1%	107,847	4.7%	2,763,890	106,303	5.6%
U.S. Short Line Railroads							
Birmingham Southern	1,188	-22.9%	1,357	-16.4%	32,840	1,263	-21.5%
Florida East Coast	1,847	-7.6%	2,165	24.6%	59,658	2,295	-1.9%
Lake Superior & Ishpeming	2,840	17.8%	2,894	13.9%	31,033	1,194	-26.7%
Paducah & Louisville	3,400	20.1%	4,157	36.6%	92,362	3,552	-11.0%
Carloads Originated							
Canadian Railroads	83,442	11.0%	86,578	12.2%	2,034,376	78,245	-0.1%
Mexican Railroads	16,287	-4.8%	16,531	2.2%	402,467	15,480	1.7%
U.S. Railroads	298,457	6.3%	292,208	3.9%	7,448,294	286,473	3.2%
Class I Railroads	292,125	6.2%	285,441	3.9%	7,313,302	281,281	3.6%
Short Line Railroads	6,332	8.1%	6,767	5.3%	134,992	5,192	-16.0%
North American Total	398,186	6.7%	395,317	5.6%	9,885,137	380,198	2.4%

¹ Carloads Carried is the sum of carloads originated and carloads received from connecting railroads.

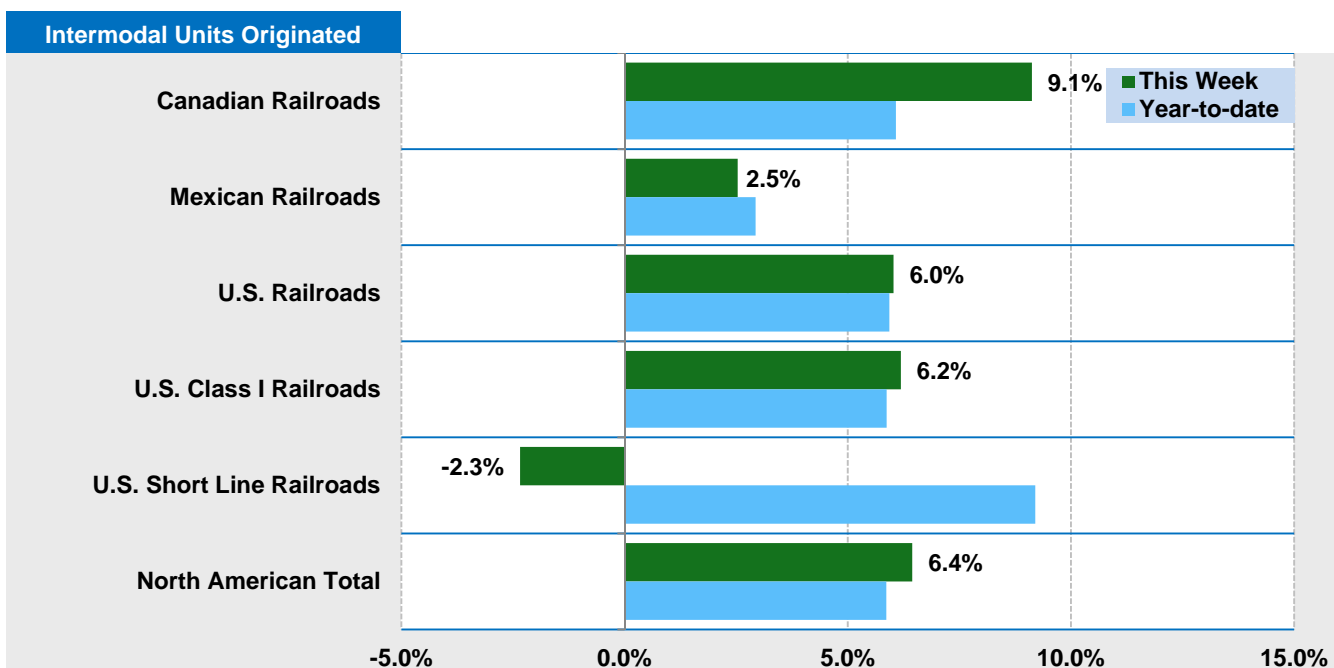


Rail Intermodal Units, by Railroad

Week 26, 2014 – Ended June 28, 2014

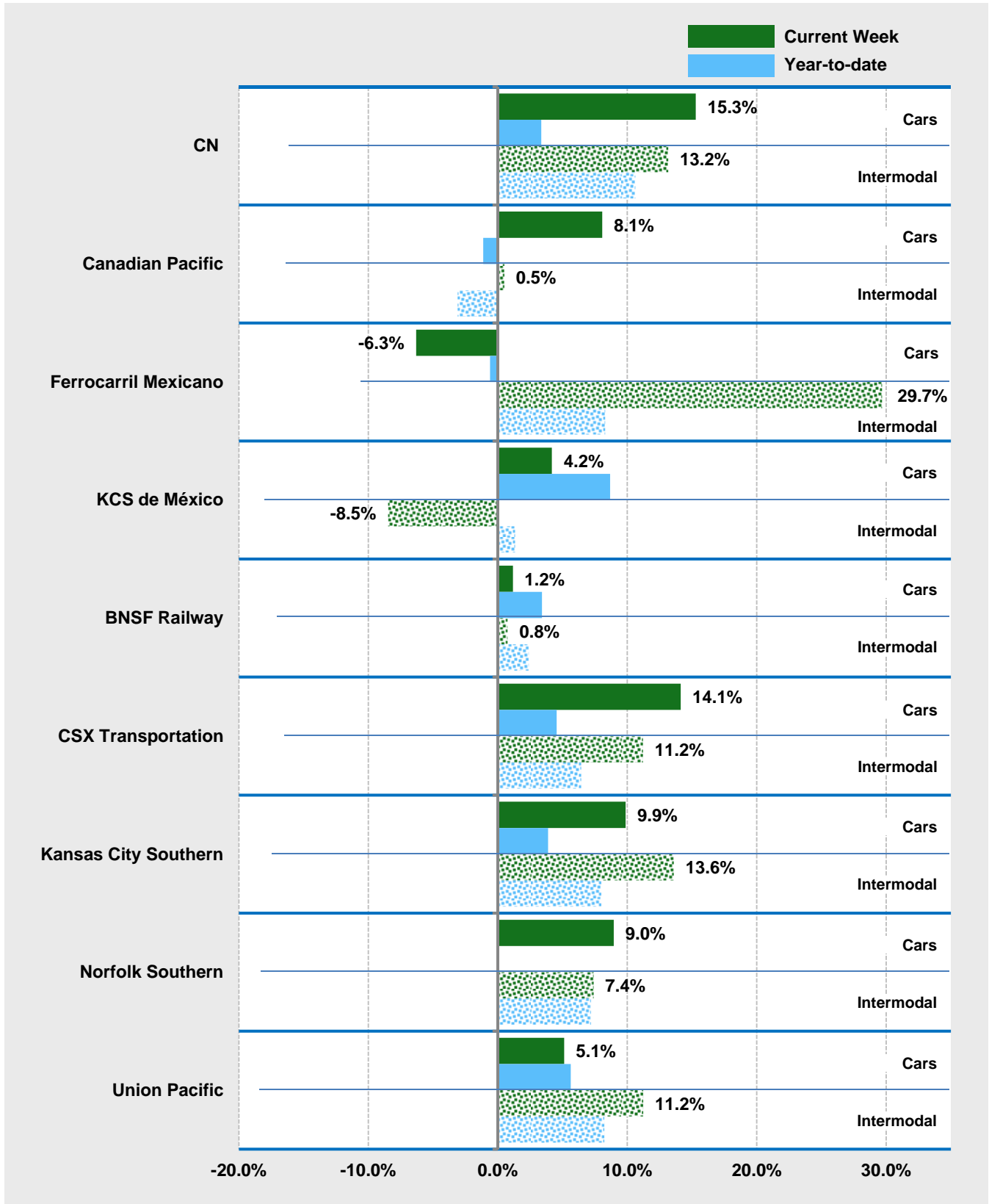
Railroad	This Week		Prior 4 Weeks		Year-To-Date		
	Cars	vs 2013	Avg/wk	vs 2013	Cumulative	Avg/wk	vs 2013
Intermodal Units Carried¹							
Canadian Railroads							
CN	41,967	13.2%	42,305	14.3%	1,007,417	38,747	10.6%
Canadian Pacific	18,341	0.5%	18,757	-1.1%	474,508	18,250	-3.1%
Mexican Railroads							
Ferrocarril Mexicano	5,344	29.7%	5,279	15.7%	120,478	4,634	8.3%
KCS de México	9,458	-8.5%	9,965	0.3%	241,314	9,281	1.3%
U.S. Class I Railroads							
East							
CSX Transportation	52,504	11.2%	51,529	3.2%	1,335,083	51,349	6.4%
Norfolk Southern	76,373	7.4%	75,281	12.8%	1,866,339	71,782	7.2%
West							
BNSF Railway	96,771	0.8%	96,327	2.9%	2,443,205	93,969	2.4%
Kansas City Southern	10,307	13.6%	9,774	8.7%	246,573	9,484	8.0%
Union Pacific	78,594	11.2%	79,399	11.5%	1,962,578	75,484	8.2%
U.S. Short Line Railroads							
Birmingham Southern	–	–	–	–	–	–	–
Florida East Coast	6,972	-2.9%	6,896	3.9%	190,528	7,328	6.3%
Lake Superior & Ishpeming	–	–	–	–	–	–	–
Paducah & Louisville	–	–	–	–	–	–	–
Intermodal Units Originated							
Canadian Railroads	58,786	9.1%	59,632	9.8%	1,446,750	55,644	6.1%
Mexican Railroads	10,405	2.5%	10,849	4.2%	257,975	9,922	2.9%
U.S. Railroads	264,766	6.0%	263,678	7.5%	6,642,440	255,478	5.9%
Class I Railroads	260,093	6.2%	259,022	7.5%	6,514,140	250,544	5.9%
Short Line Railroads	4,673	-2.3%	4,656	5.4%	128,300	4,935	9.2%
North American Total	333,957	6.4%	334,158	7.7%	8,347,165	321,045	5.9%

¹ Intermodal Units Carried is the sum of units originated and units received from connecting railroads.



Rail Traffic by Railroad

Week 26, 2014 – Ended June 28, 2014



Traffic Group Definitions
Week 26, 2014 – Ended June 28, 2014

Agricultural & Food Products	
Grain	STCC 0113 and 01144: includes grains (wheat, corn, oats, sorghum, etc.) and soybeans.
Farm products, excl. grain	STCC 01, except 0113 and 01144: includes all farm products except grains and soybeans.
Grain mill products	STCC 204, 20823, 20859, and 20923: includes flour, prepared feed, cereal preparations, milled rice, wet corn milling products, distiller's dried grains, soybean cake, and other milled grains.
Food products	STCC 20, except 204, 20823, 20859, and 20923: includes all food and feed products, except grain mill products.
Chemicals & Petroleum	
Chemicals	STCC 28 and 49 (when non-hazmat STCC is unknown): includes all chemicals and allied products (incl. ethanol and fertilizer), and hazardous materials for which the non-hazmat STCC is unknown.
Petroleum & petroleum products	STCC 13 and 291: includes crude petroleum and all products of petroleum refining, such as gasoline, kerosene, distillate fuel oil, lubricating oils and greases, asphalt pitches or tars, residual fuel oils, and liquefied gases.
Coal	STCC 11: includes anthracite, bituminous, and lignite coal.
Forest Products	
Primary forest products	STCC 241: includes primary forest or wood raw materials, except sawmill products.
Lumber & wood products	STCC 24, except 241: includes all lumber and wood products, except furniture, and primary forest products.
Pulp & paper products	STCC 26: includes all products from pulp mills, paper, paperboard or fiberboard, containers or boxes, and building paper or board.
Metallic Ores & Metals	
Metallic ores	STCC 10: includes all metallic ores, such as iron, copper, lead, zinc, gold, silver, bauxite or aluminum, manganese, tungsten, and chromium ores.
Coke	STCC 29911, 29913 and 29914: includes coal or coke briquettes, petroleum coke, and coke produced from coal.
Primary metal products	STCC 33 and 34: includes primary metal products, including galvanized, and fabricated metal products, except ordnance materials, machinery and transportation equipment.
Iron & steel scrap	STCC 40211: includes iron and steel (i.e., ferrous) scrap.
Motor Vehicles & Parts	STCC 371 and 41118: includes motor vehicles, passenger car bodies, motor bus or truck bodies, motor vehicle parts and accessories, truck trailers, and used vehicles.
Nonmetallic Minerals & Products	
Crushed stone, sand & gravel	STCC 142 and 144: includes crushed or broken stone or riprap and sand or gravel.
Nonmetallic minerals	STCC 14, except 142 and 144: includes nonmetallic minerals (clay, phosphate rock, rock salt, etc.), except fuel, crushed stone, sand and gravel.
Stone, clay & glass products	STCC 32: includes all types of glass products, hydraulic cement, structural clay products, pottery or related products, concrete, gypsum or plaster products, cut stone or stone products, and abrasives or asbestos products.
Other	
Waste & nonferrous scrap	STCC 40 except 40211, and STCC 48: includes all waste (hazardous and nonhazardous), and nonferrous scrap.
All other carloads	All Other Carloads and less than carload traffic not identified above, excluding intermodal traffic.
Intermodal Traffic	
Containers	Containers: includes equipment bearing a reporting mark ending with the letter "U," moving without an undercarriage/chassis.
Trailers	Trailers and Containers on Chassis: includes Trailers—equipment bearing a reporting mark ending with the letter "Z," with a permanently affixed undercarriage — and Containers on Chassis — equipment bearing a reporting mark ending with the letter "U," moving on an undercarriage/chassis.